



COMMUNITY MAPPING IN INFORMAL SETTLEMENTS FOR BETTER HOUSING AND SERVICE DELIVERY, CAPE TOWN, SOUTH AFRICA

Nicholas Pinfold
Cape Peninsula University of Technology

Apartheid was a massive social engineering project that lasted nearly 60 years

The problem in South Africa cannot be resolved within the **current service delivery limitations** of provincial or local government in particular

Government needs to create **massive public-private partnerships (PPPS)** run by the private sector in areas which require urgent attention

To unleash unprecedented prosperity we must create a sustainable country wide **mixed income urban housing model** that will reverse apartheid - but what about informal settlements?

(Hlumelo, Biko 2013)

Informal settlements in South Africa lack formal planning

The residents are permanently in a state of **legal-social insecurity**

The informal settlement upgrade program is to facilitate the structured in situ upgrading of the informal settlement as opposed to relocation

The program provides benefits for **all the inhabitants** including persons currently excluded from the benefits of the Housing Subsidy Scheme



Partnerships

- ▶ TRP - Department of Town and Regional Planning
- ▶ SDI/ISN - Slum Dwellers International/Informal Settlement Network
- ▶ CORC - Community Organisation Resource Centre

*SERVICE
PROVIDER*

ACADEMIA

COMMUNITY



Community Engagement

Higher Education Act, 1997.

Post-Apartheid reconstruction of South African Higher Education system includes Community Engagement as one of the core responsibilities of higher education, alongside Teaching, Learning and Research (Hall, 2010:2)

Service Learning Project: Flamingo Crescent Informal Settlement - re blocking (enumeration and mapping)

Re-blocking in informal settlements - moving physical structures to facilitate a more practical layout to improved living conditions, provide basic services, adjust movement routes and to improve spaces for community activities. These minimal adjustments can mostly be done by residents themselves once a layout plan has been approved by the relevant local authority.



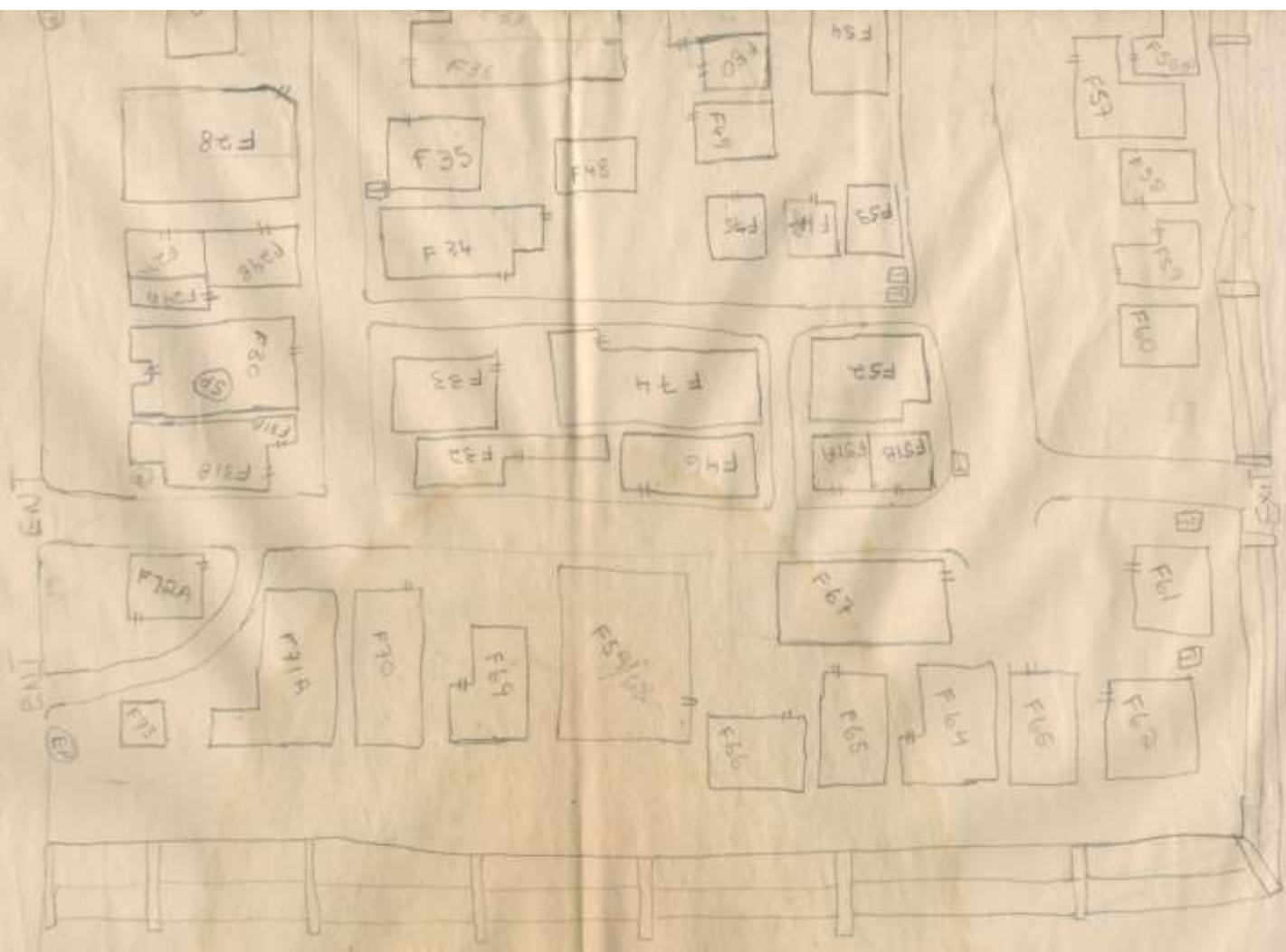
Goals

- Improve community-led mapping (measuring) of the site
- Provide 2D/3D printouts of the 'as built' plan for display in the community office
- Confirm floor areas of existing shacks with community measured plans
- Attend site meetings with partners and the City of Cape Town
- Facilitate a more practical layout of the settlement





- 1 - Entry
- 2 - Corridor
- 3 - Water Tap
- 4 - Electric pole
- 5 - Toilets - Chemical Toilets 14



F1

FLAMINGO CRESCENT
INFORMAL SETTLEMENT
MARCH 2013



CAPE PENINSULA UNIVERSITY OF T



FACULTY: INFORMATICS AND DESIGN

DEPARTMENT: TOWN AND REGIONAL PLANNING



FLAMINGO CRESCENT
INFORMAL SETTLEMENT

SEPTEMBER 2014



CAPE PENINSULA UNIVERSITY OF TECHNOLOGY

FACULTY: INFORMATICS AND DESIGN

DEPARTMENT: TOWN AND REGIONAL PLANNING

FLAMINGO CRESCENT
INFORMAL SETTLEMENT

SEPTEMBER 2014



CAPE PENINSULA UNIVERSITY OF TECHNOLOGY

FACULTY: INFORMATICS AND DESIGN

DEPARTMENT: TOWN AND REGIONAL PLANNING

FLAMINGO CRESCENT
INFORMAL SETTLEMENT

SEPTEMBER 2014



CAPE PENINSULA UNIVERSITY OF TECHNOLOGY

FACULTY: INFORMATICS AND DESIGN

DEPARTMENT: TOWN AND REGIONAL PLANNING

FLAMINGO CRESCENT
INFORMAL SETTLEMENT
SEPTEMBER 2014



CAPE PENINSULA UNIVERSITY OF TECHNOLOGY

FACULTY: INFORMATICS AND DESIGN

DEPARTMENT: TOWN AND REGIONAL PLANNING





